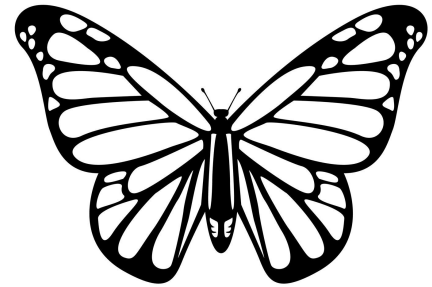


# Pointillism

# Butterflies

# Day One





**REAL**  
**4K**  
ULTRAHD

# DAY ONE RUN DOWN:

**1**

Video, pause and ask Q's,  
Have students repeat  
vocabulary

**2**

SHORT discussion on  
Symmetry

**3**

Demo: how to use  
Pointillism to create  
symmetry

**4**

Pass out materials  
Students work  
independently

**5**

Clean up  
by table wash hands

**6**

Final  
CLASS Discussion  
Video If extra time

# SEURAT

DIGITAL

# STORYBOOK

*for kids*



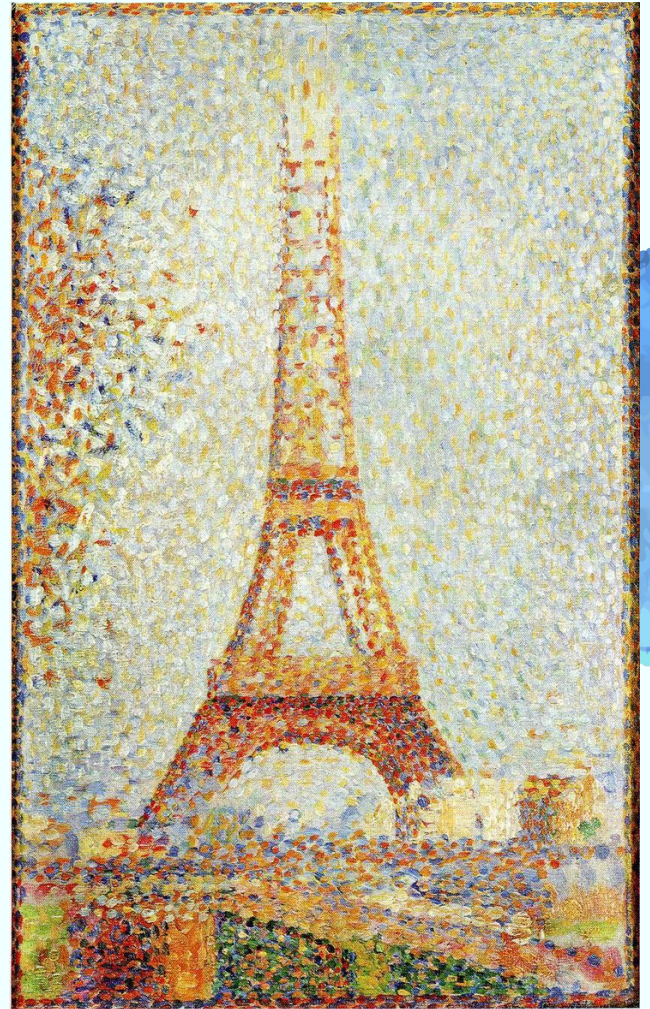
KIDS ART PROJECTS 101

*Narrated by Dr. Medico*





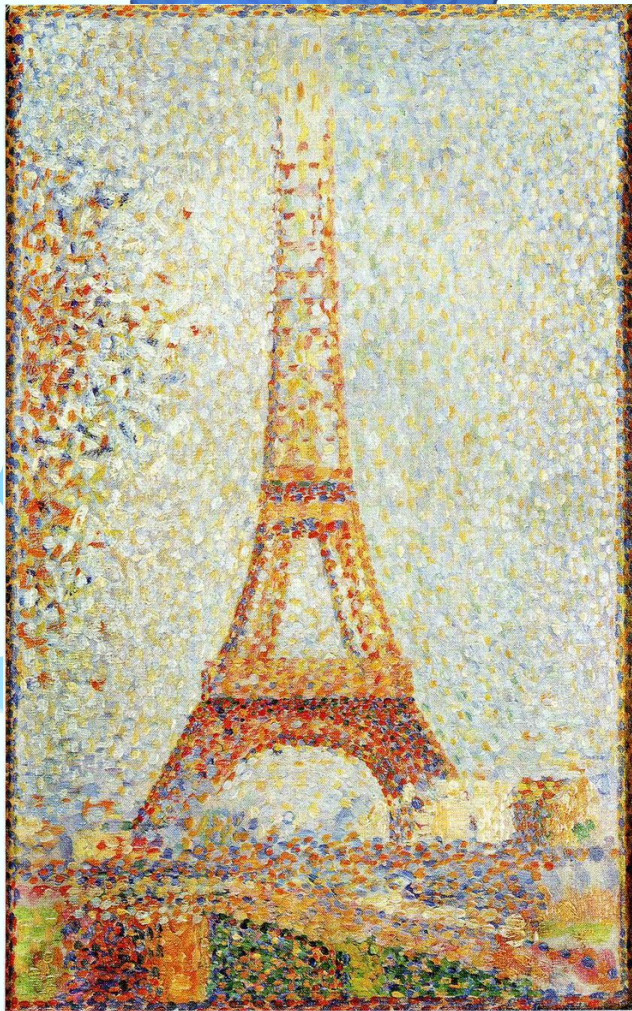
# What is **Pointillism**



34. THE EIFFEL TOWER. 1889. New York, Mr. and Mrs. Germain Seligman

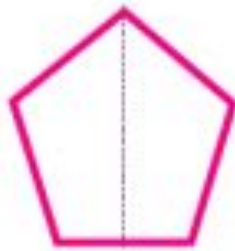
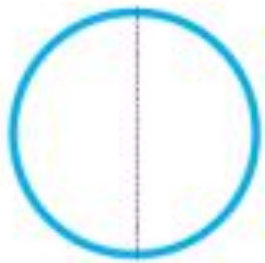
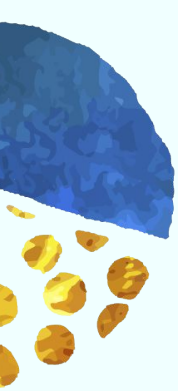


# It Has Dots



14. THE EIFFEL TOWER. 1889. New York, Mr. and Mrs. Germain Seligman



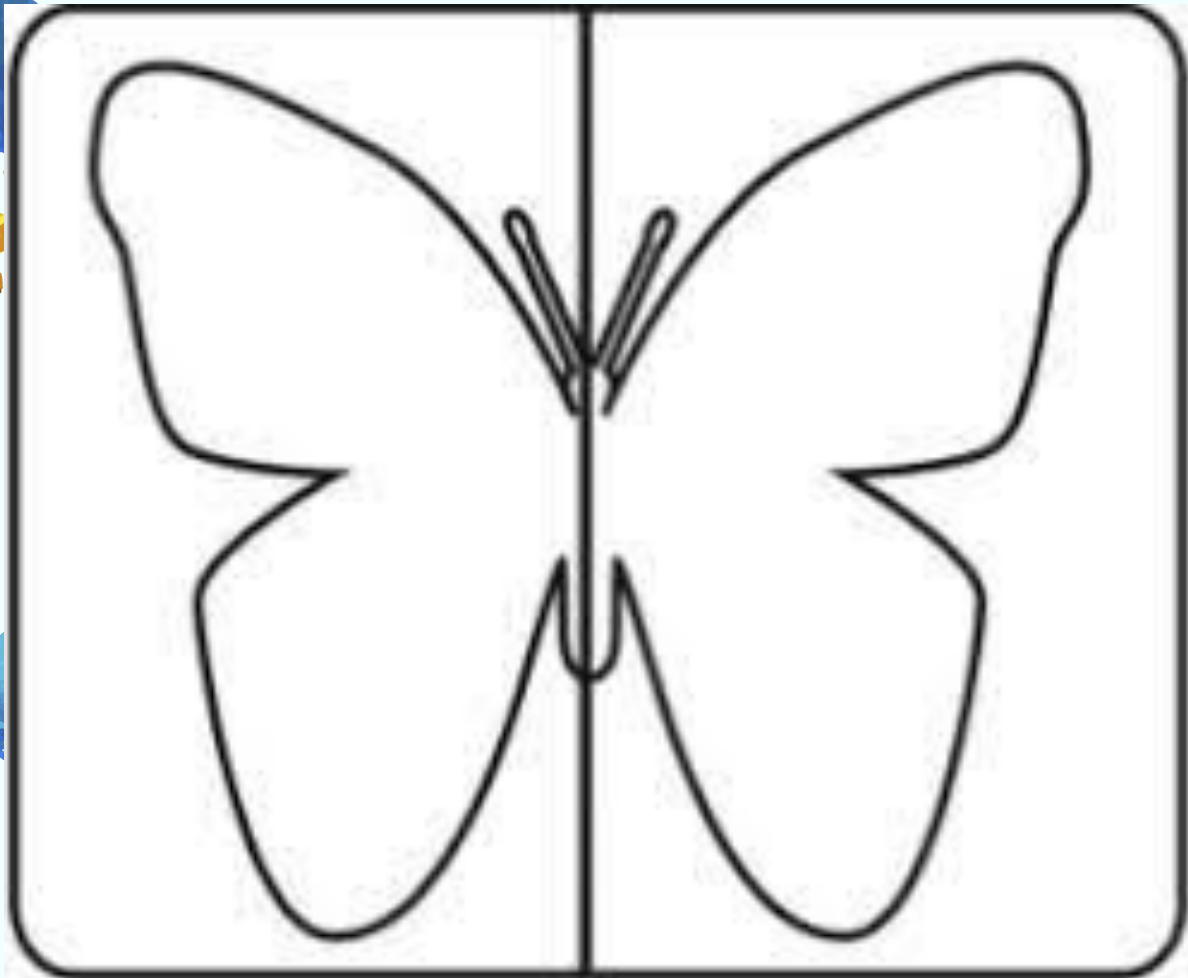


What is Symmetry?

- Same on both sides

Do these shapes have symmetry?





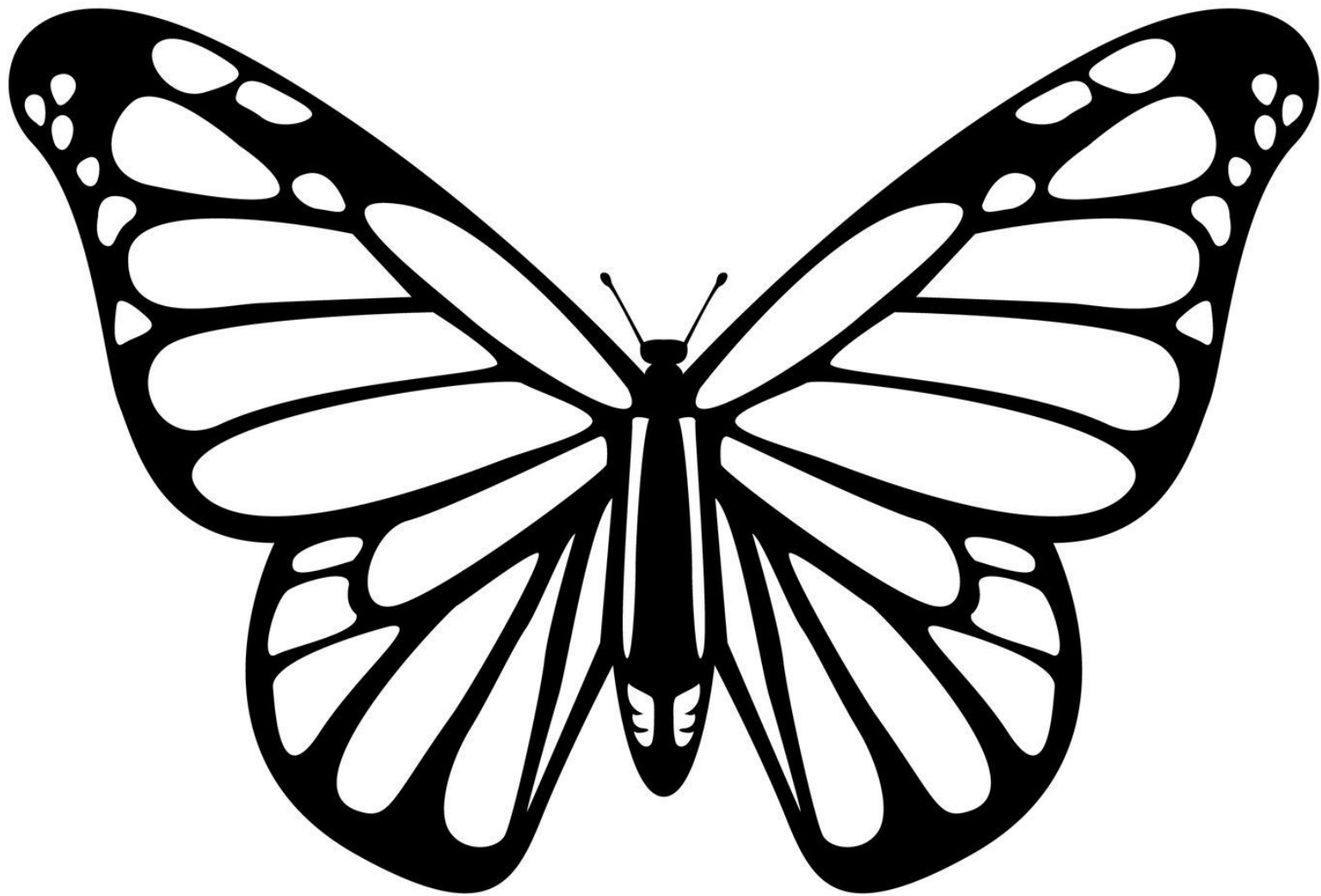
# Symmetry

Same on both sides

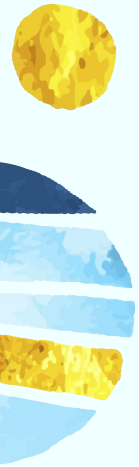
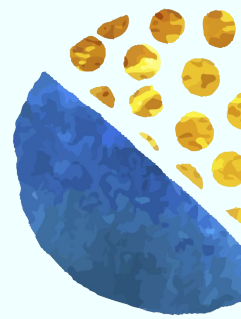
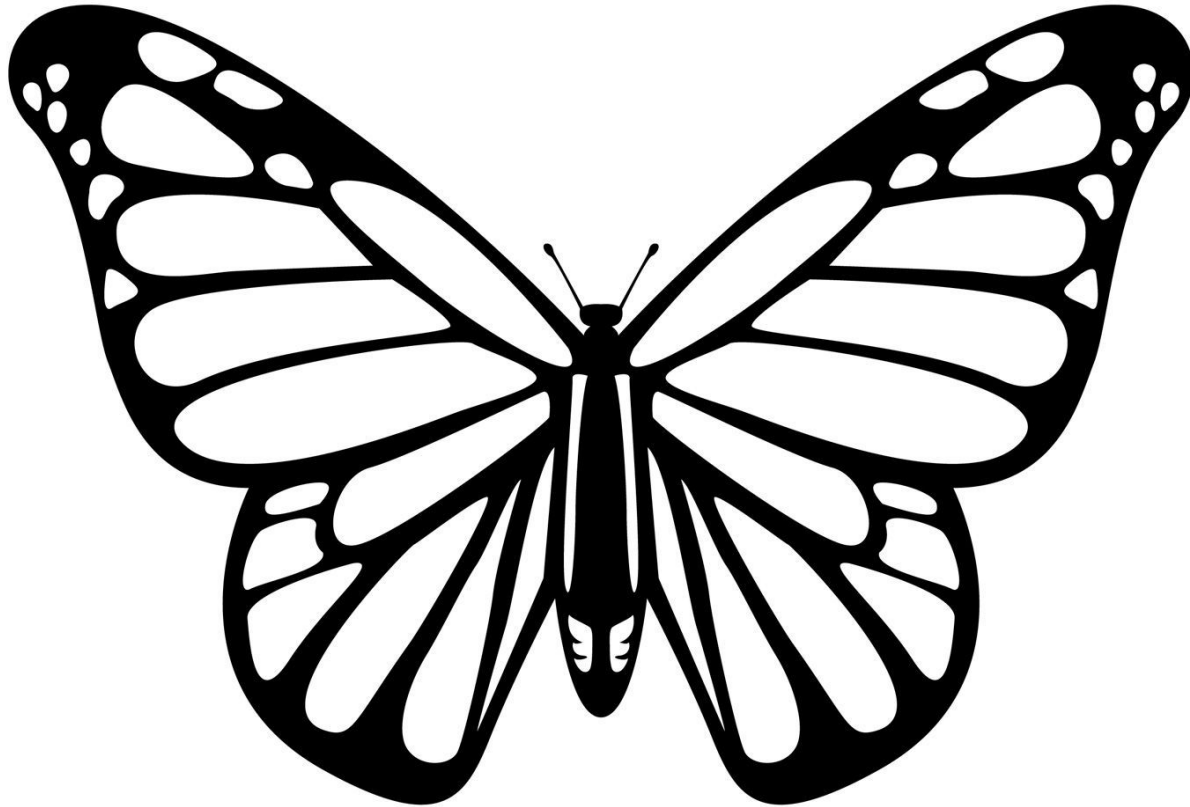
Does this have  
**symmetry?**

WHY/HOW???





**Demo how to paint the butterfly!/  
students work independently  
adding dots with their fingers**

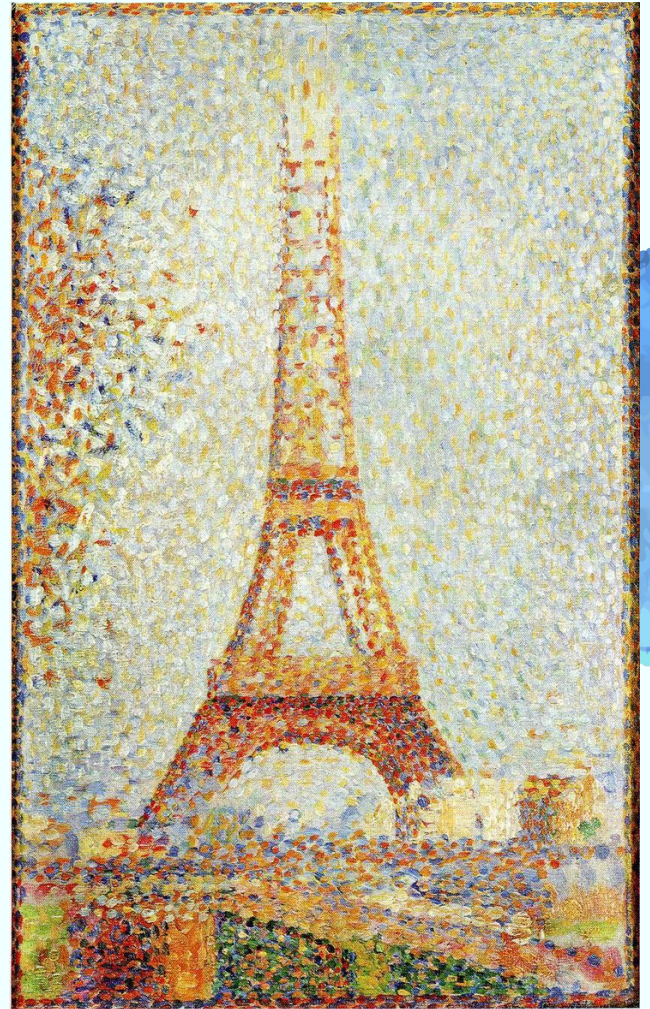


# CLEAN UP

- Demo CLEAN UP/ hand washing
  - Call up by table to **wash hands**.
  - Show how to make two lines at the sink.
- paras/ teacher collect the artwork



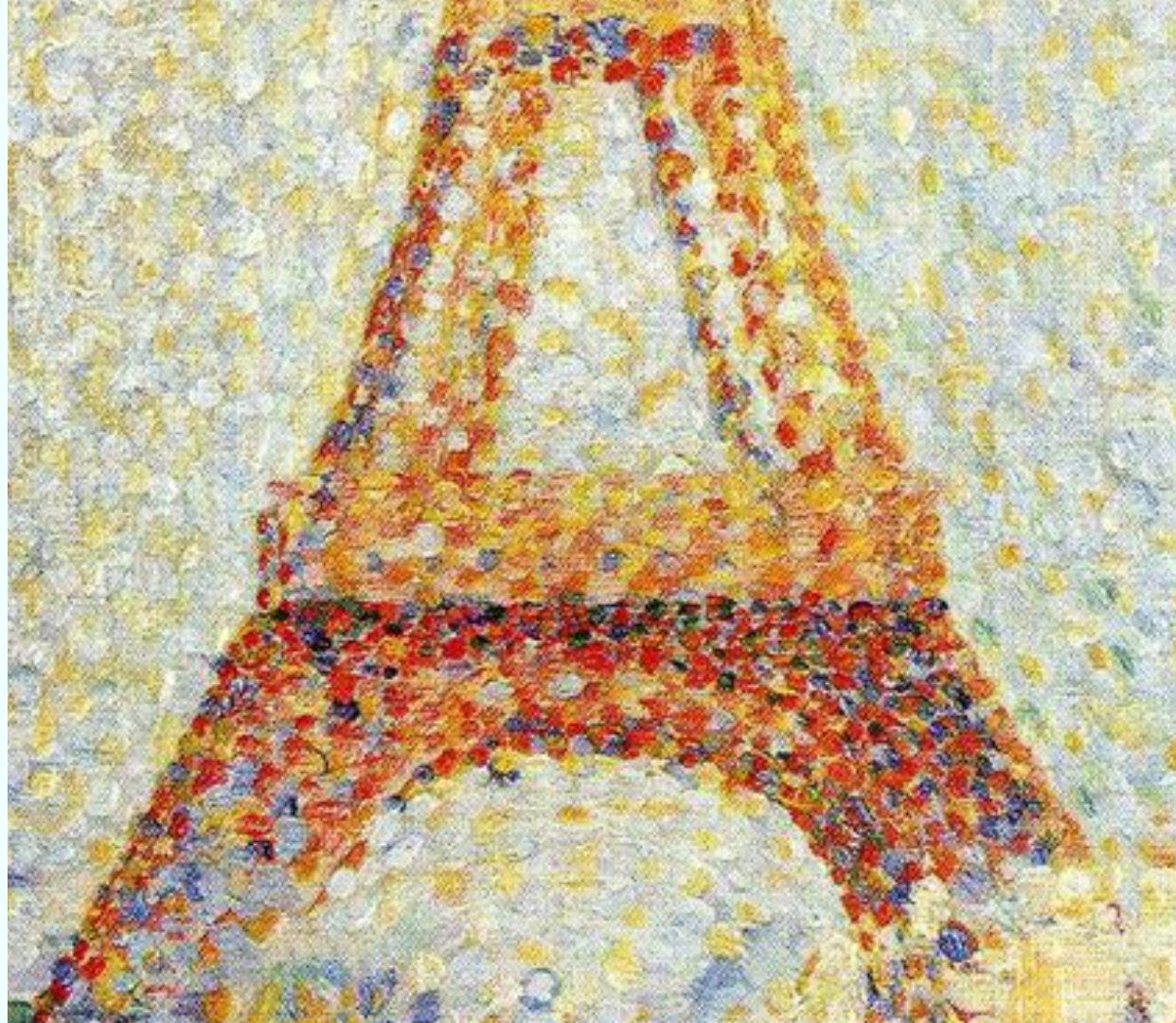
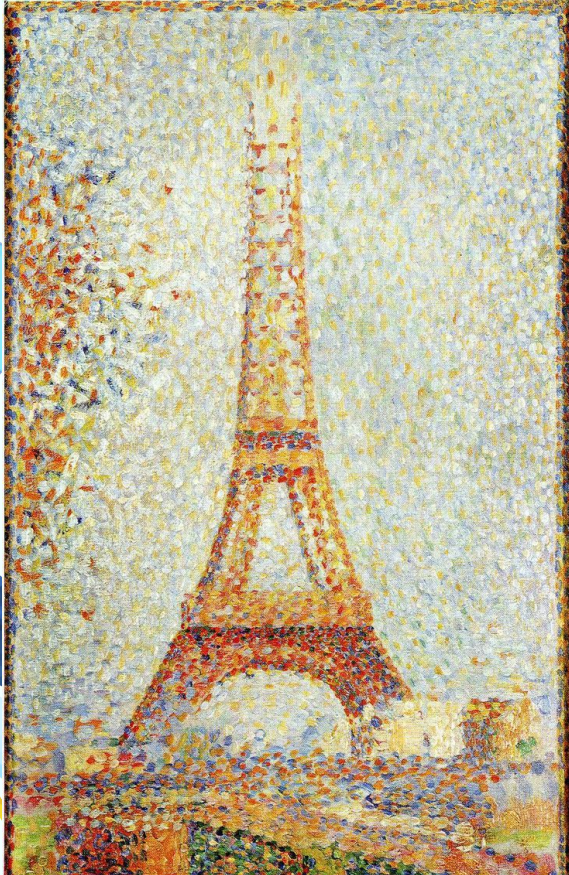
# What is **Pointillism**



34. THE EIFFEL TOWER. 1889. New York, Mr. and Mrs. Germain Seligman



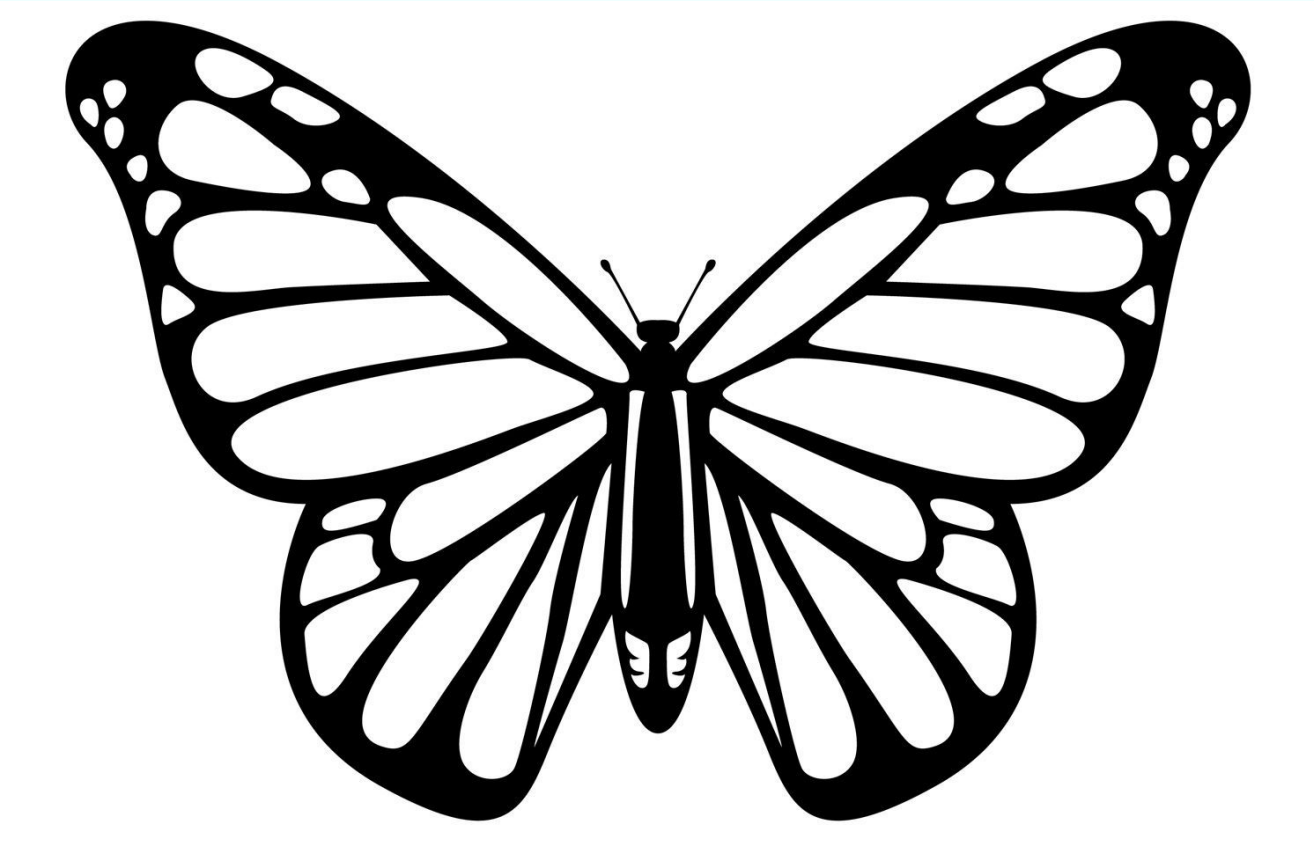
**Why did the teacher choose this image to show Pointillism? (the dots?)**





## What did we do to our butterflies?

We added (DOTS) on one side or both to create what? SYMMETRY





**ART WITH MATI  
AND DADA**

# **GEORGE SEURAT**

